

Motorcycle security

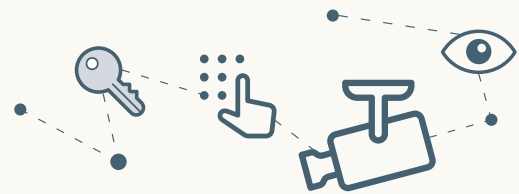
Reducing the risk of theft

In this current climate travel plans and priorities may change but the risk of theft remains the same.

Let's get visual – the Metropolitan Police have created a handy #LockChainCover video for you to keep unwanted hands off your beloved motorcycle.



It's easy as 123 with these simple steps you can follow to achieve #LockChainCover:



- 1. LOCK:** Use a disc lock on the front wheel to stop your bike being wheeled away. Fit a grip lock to the throttle and engage the steering lock.
- 2. CHAIN:** Secure the rear wheel with a chain and a padlock. Attach the chain to a ground anchor or other fixed object where possible.
- 3. COVER:** Bike covers prevent immediate access to the controls and security features and stop thieves shopping for bike models.

Show me the video >



LV=
BROKER